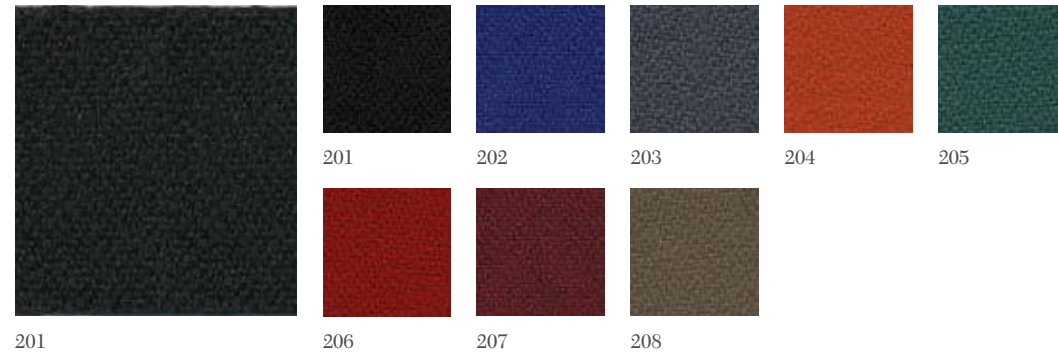


CREPE

CATEGORIA 1

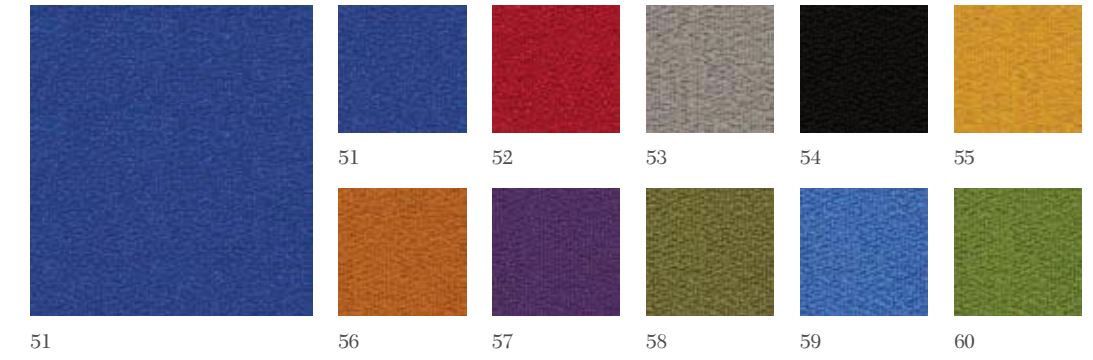
1. 350 gr/mtl
2. 100% Poliestere/Polyester
3. Classe 1, EN 1021-1 EN 1021-2
4. 50.000+/- 10% cicli/rubs



EXTREME

CATEGORIA 2

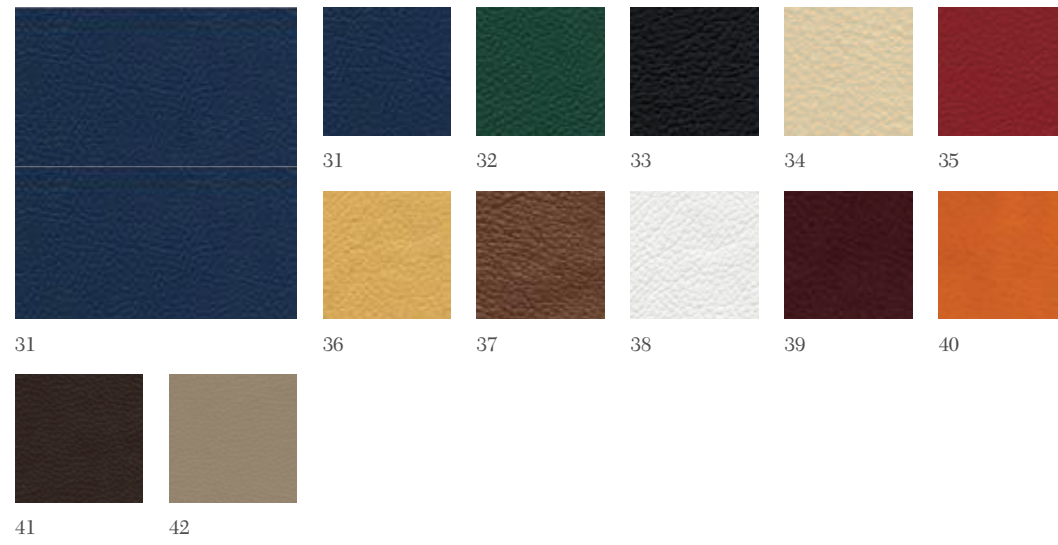
1. 350 g/mtl
2. 100% Xtreme FR®
3. Classe 1, EN 1021-1 EN1021-2
4. 100.000 cicli/rubs +/- 5.000
- 5 anni di garanzia/5 years warranty



ECOPELLE

CATEGORIA 2

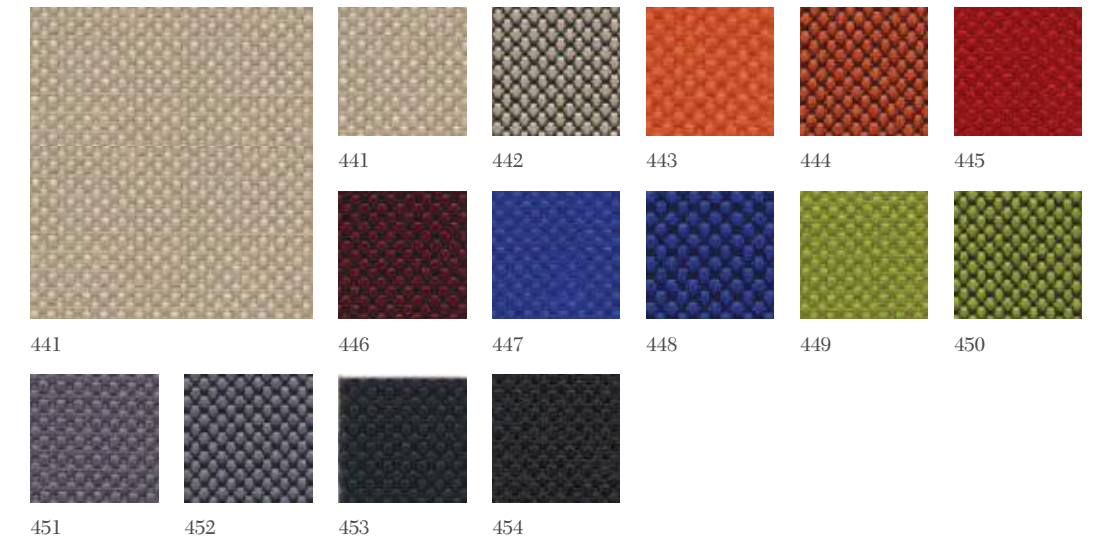
1. 630 gr/mt2 -
2. 83% PVC, 17% Sintetico/Synthetic
3. ISO 3797-DIN 75200 - CSE RF 4/83
4. 30.000 cicli/rubs



LASER

CATEGORIA 2

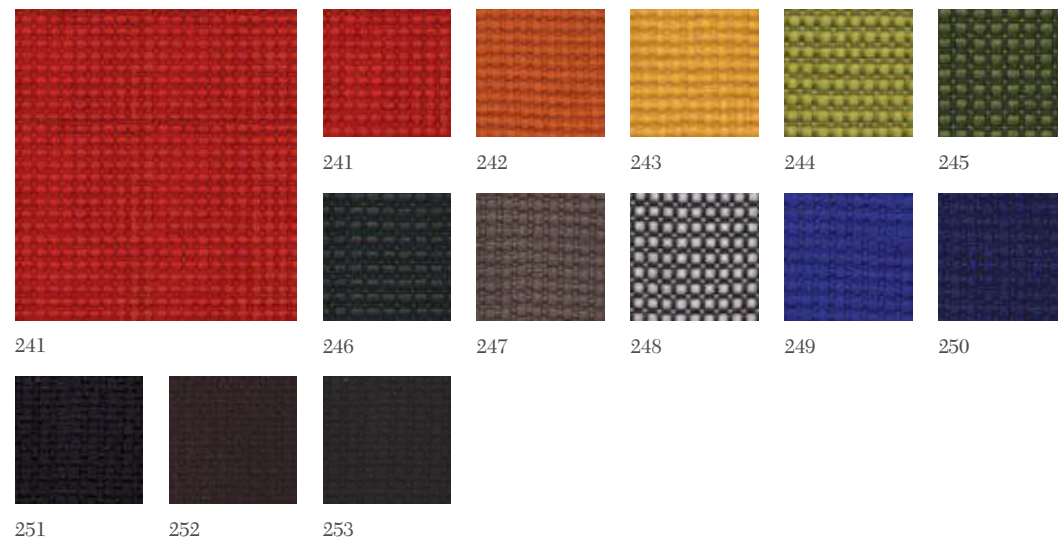
1. 560 gr/mtl
2. 100% Poliestere FR®
3. Classe C1, B1, M1, CRIB 5, BS 7176 Medium Hazard, NF D 60013 Class AM18
4. 80.000+/- 10% cicli / rubs



BIKOS

CATEGORIA 2

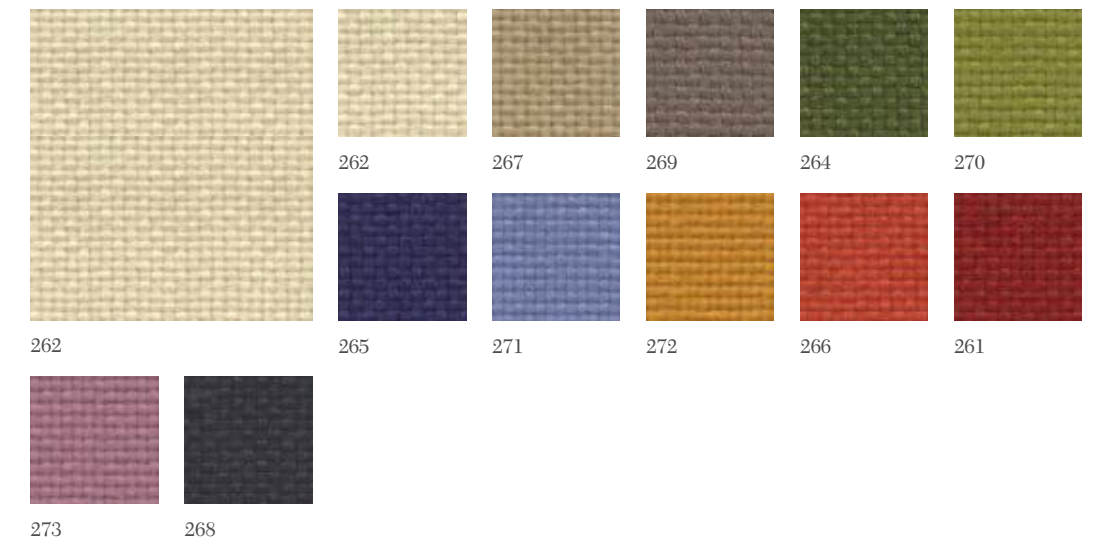
1. 480 gr/mtl -
2. 100% Trevira CS
3. Classe 1, M1, C1, B1, EN 1021/1-2, IMO A656, BS7176 Medium Hazard
4. 100.000 +/- 10% cicli/rubs



TRAMA

CATEGORIA 3

1. 735 gr/mtl
2. 100% Trevira CS
3. Classe 1, M1, C1, B1, EN 1021/1-2, IMO A652 [16]
4. 100.000+/- 10% cicli/rubs



SISTEMA PRO

CATEGORIA 3

- 1. 710 g/lin.m
- 2. 63% PU - 16% CO - 21% PL
- 3. INI1975 classe 1EMME, UNI 9175/FA
BS EN 1021 P1/2 1994BS 5852
- 4. 30.000 Martindale



MELANGÈ

CATEGORIA 3

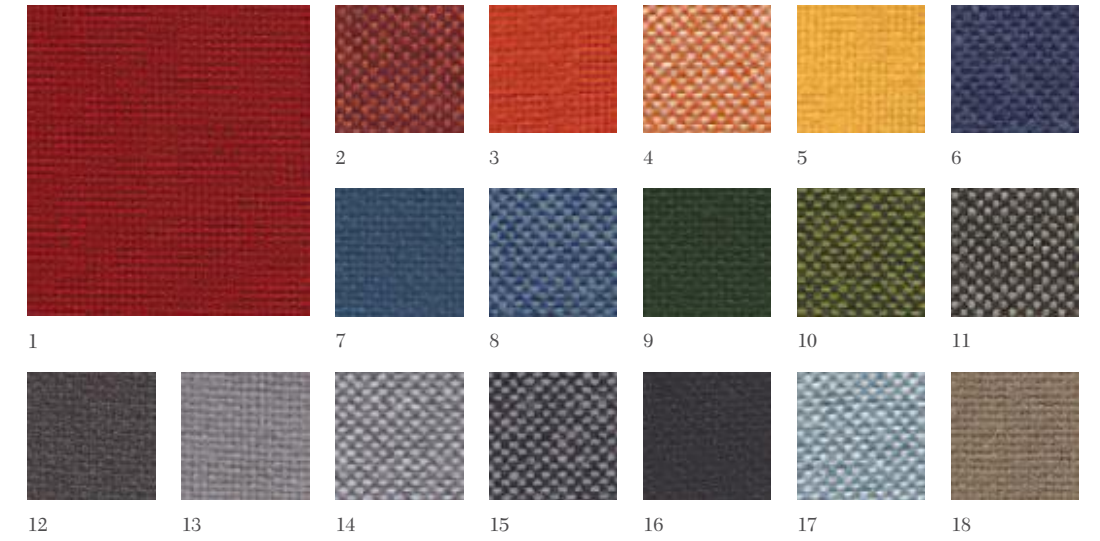
- 1. 390 g/lin.m
- 2. 100% Trevira CS
- 3. Classe1, B1, M1, CRIB5, EN1021/1-2, I
MO A 652 [16] BS7176, NF D 60013 Class AM18
- 4. 80.000+/- 10% Martindale



JET

Categoria 3

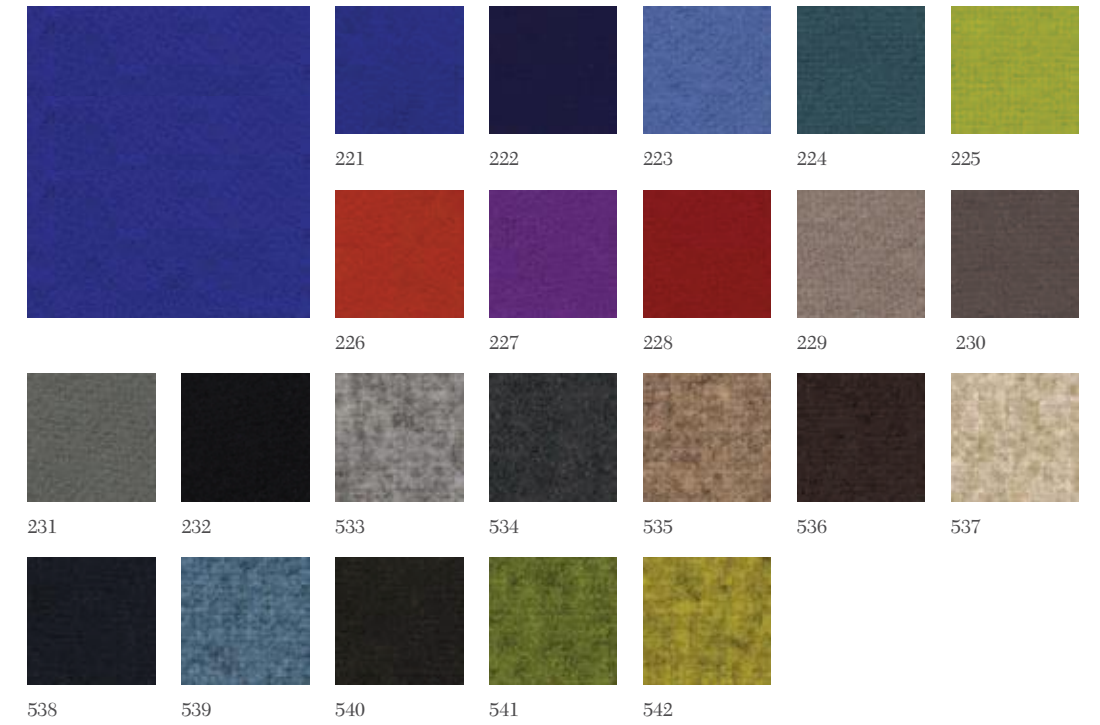
- 1. 365 +/-5% g/lin.m
- 2. 100% Poliestere Trevira CS
- 3. Classe 1, EN 1021-1 EN 1021-2
- 4. 65.000 +/-10% Martindale



LANA

CATEGORIA 5

- 1. 410 gr/mt²
- 2. 100% Pura lana vergine/Pure wool
- 3. Cl. 1 su richiesta/Cl. 1 on request
- 4. 30.000 Martindale



PREMIUM

CATEGORIA 7

1. Spessore/Thickness. 1,2/1,4 1,2/1,4
2. 100% Pelle bovina/Bovine leather
3. EN1021-1 e EN1021-2



PELLE LEATHER

CATEGORIA 5

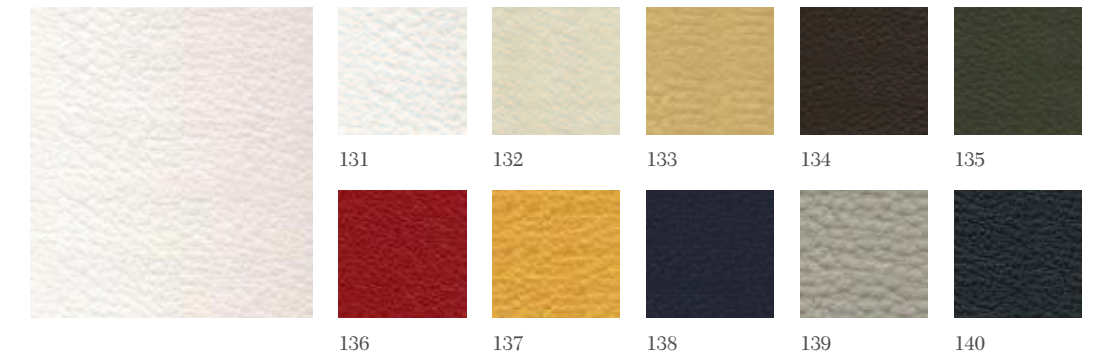
1. 620 g/in.m
2. 100% Pelle bovina/Bovine leather
3. EN1021-1 e EN1021-2. Cl.1



ELEGANCE

CATEGORIA 7

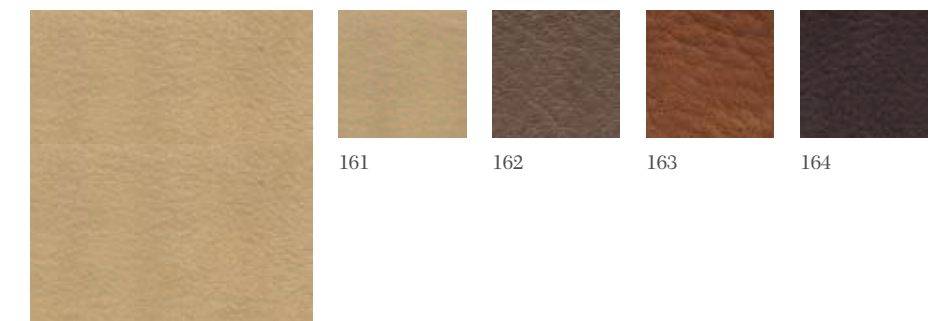
2. 100% Pelle bovina/Bovine leather
3. EN1021-1 e EN1021-2



SOFT

CATEGORIA 8

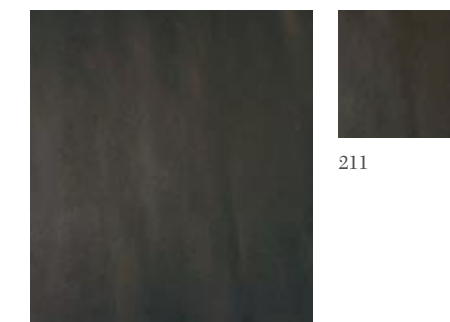
2. 100% Pelle bovina/Bovine leather
3. EN1021-1 e EN1021-2



HERITAGE

CATEGORIA 8

2. 100% Pelle bovina/Bovine leather
3. EN1021-1 e EN1021-2



REMIX

kvadrat

Categoria 7

- 1. 415 g/lin.m
- 2. 90% New wool worsted 10% Nylon
- 3. Classe 1, EN 1021-1 EN 1021-2
- 4. 100.000 Martindale

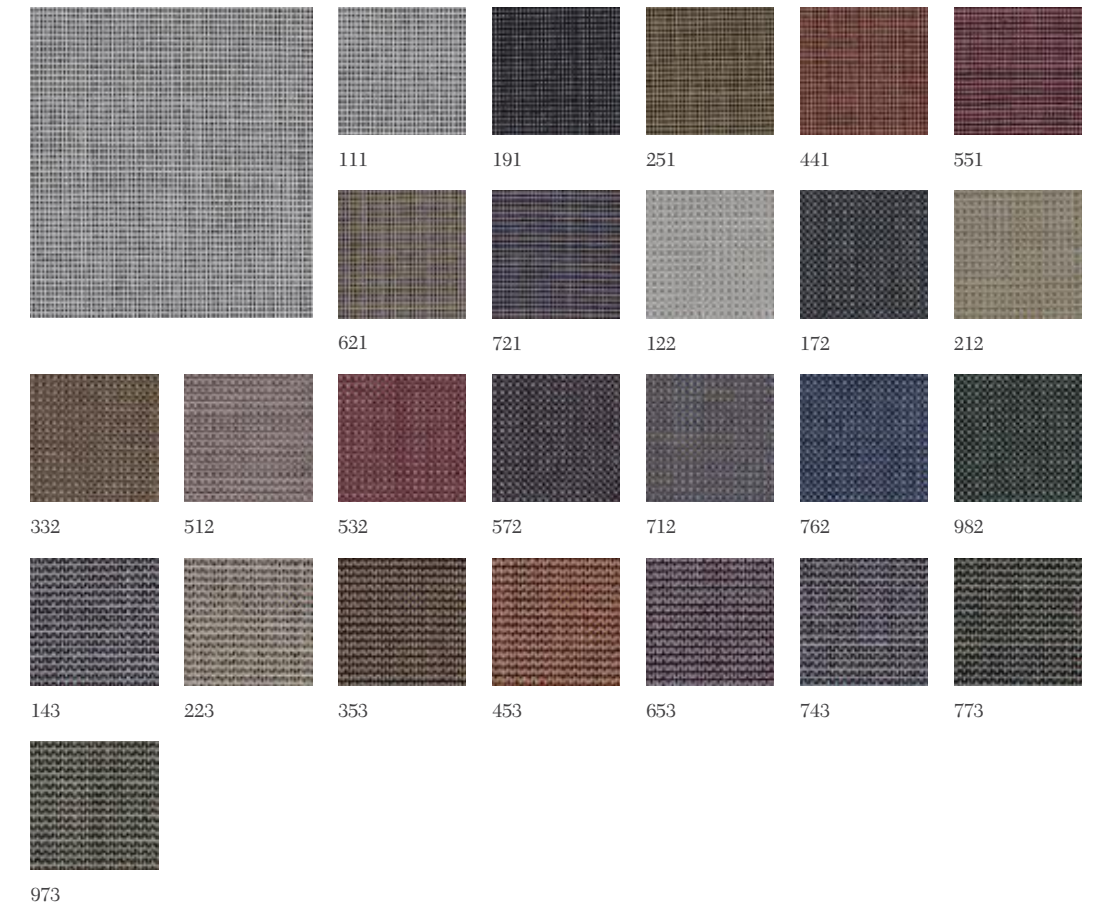


UMAMI

kvadrat

Categoria 7

- 1. 470 g/lin.m
- 2. 90% New wool worsted 10% Nylon
- 3. Classe 1, EN 1021-1 EN 1021-2
- 4. 60.000 Martindale



HERO

kvadrat

Categoria 8

- 1. 580 g/lin.m
- 2. 96% New wool 4% Nylon
- 3. Classe 1, EN 1021-1 EN 1021-2
- 4. 45.000 Martindale

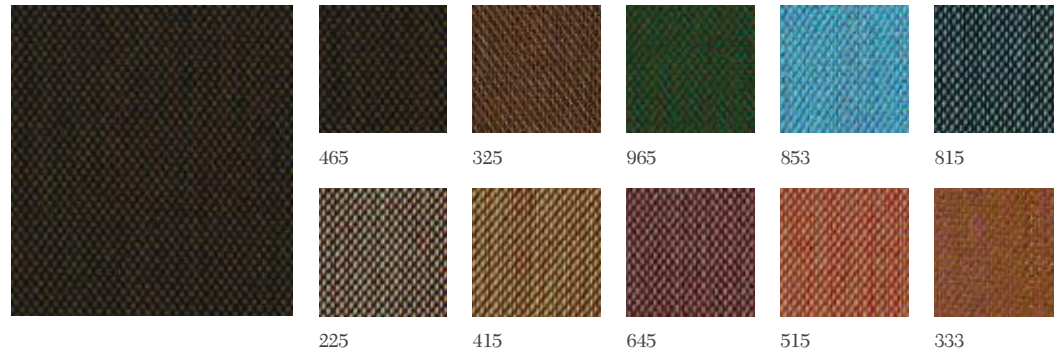


STEELCUT TRIO

kvadrat

Categoria 7

1. 770 g/lin.m
2. 90% New wool worsted
3. Classe 1, EN 1021-1 EN 1021-2
4. 100.000 Martindale

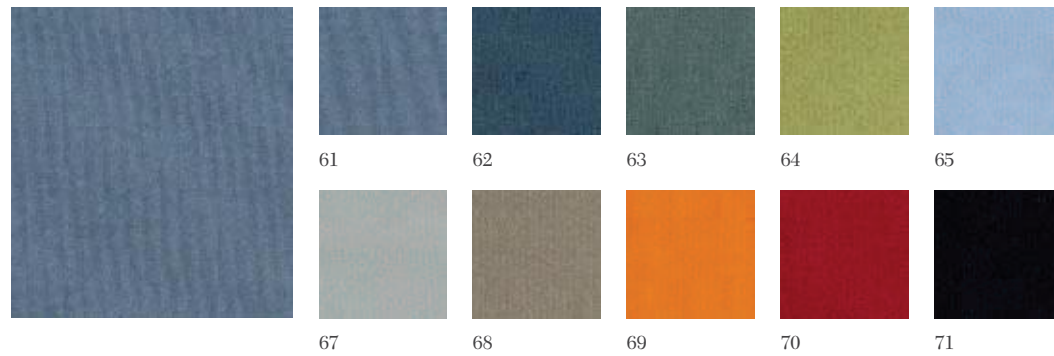


TEMPO

kvadrat

Categoria 6

1. 470 g/lin.m
2. 100% Trevira CS
3. Classe 1, EN 1021-1 EN 1021-2
4. 70.000 Martindale



PIED POULE

Categoria 6

1. 550 g/lin.m
2. 66% cotone - 34% poliestere
4. 35.000 cicli Maltidale



VELLUTO

RUBELLI

Categoria 7 / Oro Venezia 126 Categoria 8

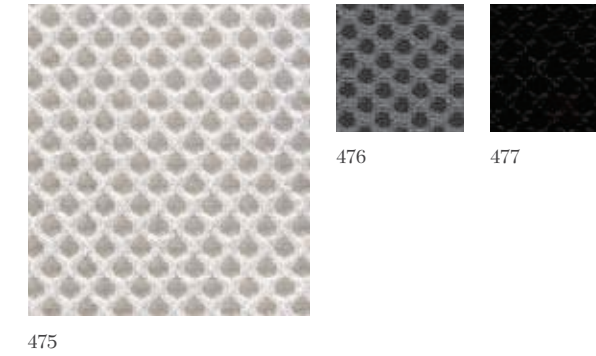
1. 600 g/lin.m
2. 100% PL Flame retardant



RETI

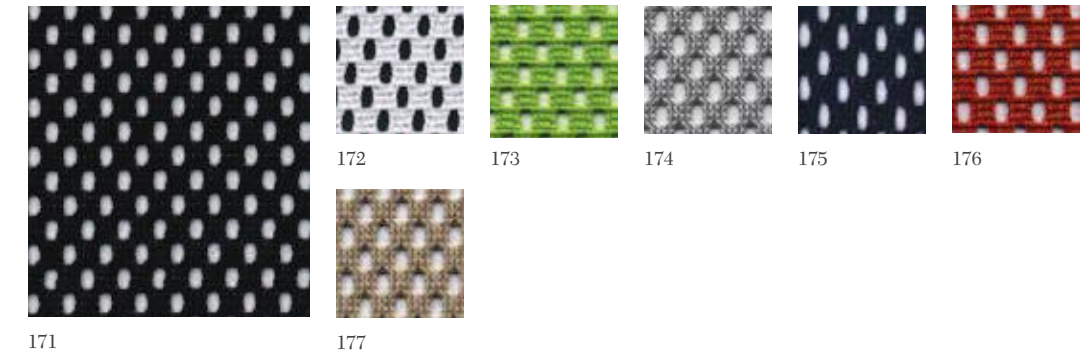
RETE / MESH GABRIEL CAT. 8H

1. 510 gr/lin.m
2. 100% poliestere
3. Classe 1 IM
4. 70.000 Martindale



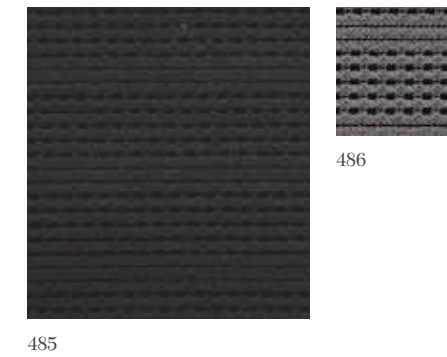
RETE / MESH GOAL CAT. 8D

1. 350 gr/mq
2. 100% poliestere/ polyester
3. CL1



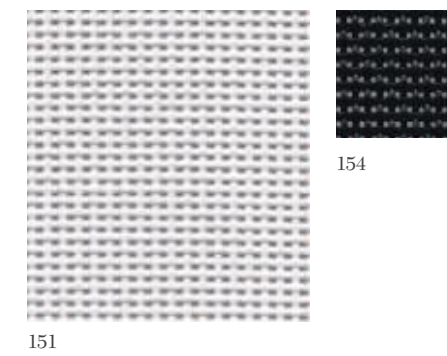
RETE / MESH SQUARE CAT. 8G

1. 350 gr/mq
2. 100% poliestere/ polyester



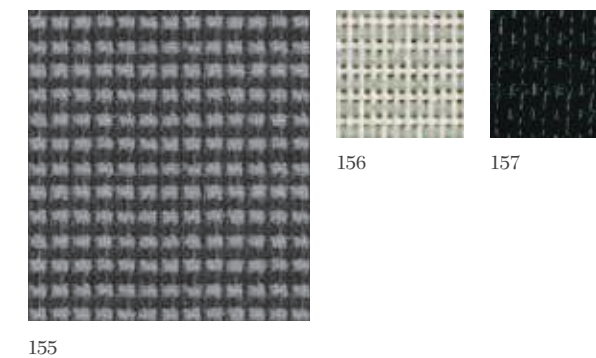
RETE / MESH NET CAT. 8F (SEASON)

1. 560 gr/mq
2. 70% polivinile / polyvinyl, 30% poliestere / polyester
5. 8 (1- max. 8)

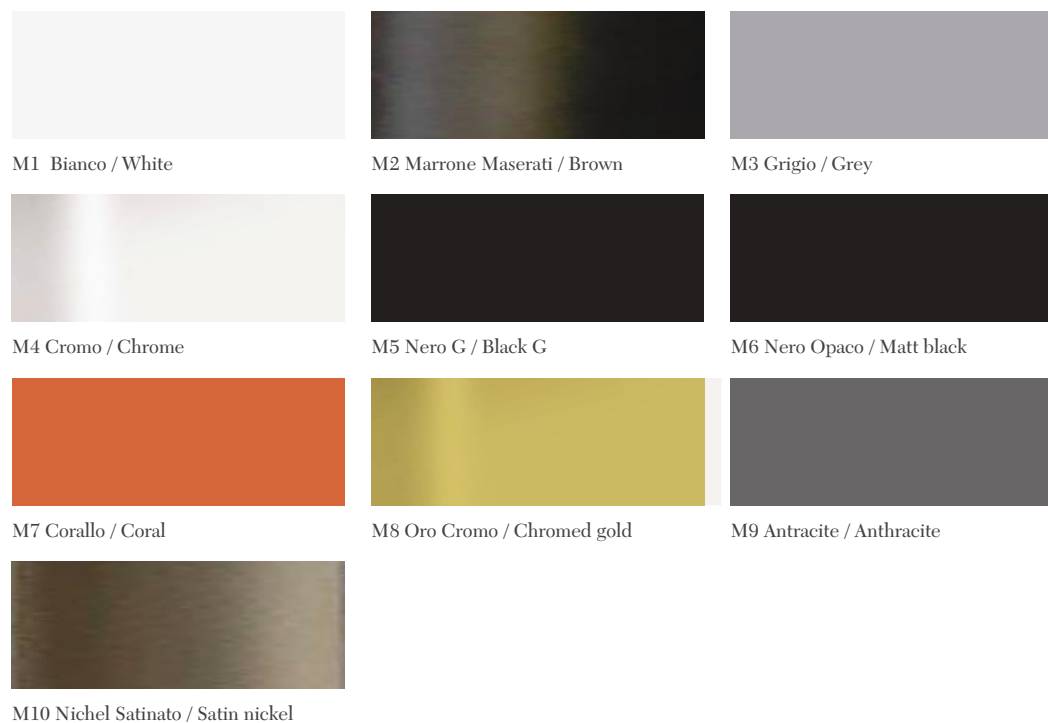


RETE / MESH NET PLUS CAT. 8E (WORD)

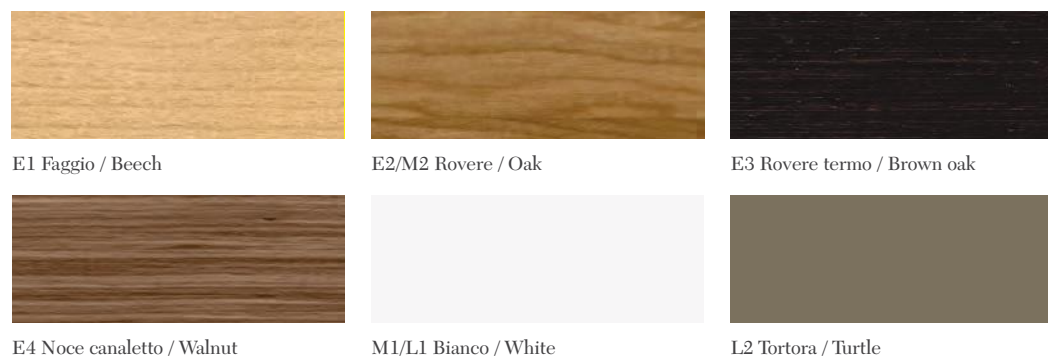
1. 490 gr/mq
2. 45% poliestere/ polyester, 55% polivinile / polyvinyl



METALLO



LEGNO



E = Essenza / Veneer
EI = Faggio ignifugo / Fireproof beech
L = Laccature / Laquered
M = Melaminico / Melamine

LEGENDA	1. Peso	2. Composizione	3. Omologazione	4. Durabilità	5. Resistenza al fuoco
LEGEND	1. Weight	2. Composition	3. Flammability	4. Durability	5. Fire resistance

Quinti persegue la politica di miglioramento continuo dei prodotti e dei servizi, si riserva pertanto di apportare modifiche tecniche, estetiche e dimensionali senza alcun preavviso. Le dimensioni possono subire variazioni del +/-3%. Quinti pursues the politic of products and services improvement, it reserves the right, at any time, to make any necessary dimensional technical and aesthetic modifications to its products without any notice. The dimentions can undergo changes of +/- 3%.